

New York Pinewoods Folk Music Club

October 2005

NEWSLETTER

vol 40, No.9

Fall Weekend - Oct. 21-23, 2005

Don't Miss This Weekend!

This year's fall weekend promises to be one of the best ever. Bring your families, bring your friends, bring instruments and voices. See flyer & registration coupon in centerfold.



This is our first visit to Kutz Camp, in Warwick, NY, with lots of rooms and spaces for workshops and informal music. Not only were we able to lower the prices, it's nearby (just 50 miles from NYC) on the NY-NJ border and easily reached by car or NJ public transit bus #196 (4 express busses leave Port Authority on Friday evening).

The weekends offer an unequalled opportunity to interact with other music-lovers through formal workshops, participatory workshops, and



lots of informal music making as shown in these pictures from last Spring. Get to know Finest Kind (Ian Robb, Shelley Posen, & Anne Downey); three people who infuse their great harmony singing with their obvious love for the

music. Shelley's recent CD, *Manna*, is "a tzimmes of Shelley originals, funny and sad, about Jewish food, family, and festivals. You'll laugh, you'll cry, you'll run to the fridge." Mary Jones is a lively caller of English Dances. Her happy spirit will encourage even the least confident to trip the light fantastic.

Sign up now!

The lower prices are in effect until October 10!



Pictures from Spring 2005 Folk Music Weekend courtesy of Harry Baya (rightmost of the 4)

NYPFMC Events at a Glance

September

30 Fri **Moira Craig, Carolyn Robson, Sara Morgan**; 8 pm; Polytechnic University, Brooklyn ☺

October

1 Sat **Laissez Les Bons Temps Rouler!** - Elements of Cajun Music Workshop with Erica Weiss; 2-4:30pm; upper west side

2 Sun **Balkan Singing Workshop** with Erica Weiss 2-4 PM

2 Sun **Sea Music: The Canniffe Family + NY Packet**; 3pm, South Street Seaport Melville Gallery

5 Wed **Folk Open Sing**; Ethical Culture Soc., Brooklyn, 6:30pm

10 Mon **NYPFMC Exec. Board Meeting** 7:15pm at the club office, 450 7th Ave, #972D (34-35 St), info 1-718-575-1906

14 Fri **Tom Gibney Memorial, 7:30pm** at the Community Church ☺

16 Sun **Sacred Harp Singing** at St. Bart's, Manhattan; 2:30 pm

21-23 **Fall Folk Music Weekend** - see flyer in centerfold

22 Sat **Chantey Sing** at Seamen's Church Institute, 8pm

26 Wed **Newsletter Mailing**; at Club office, 450 7th Ave, #972, 7 pm

27 Thur **Riverdale Sing**, 7:30-10pm, Riverdale Prsby. Church, Bronx

29 Sat **Halloween Singing Party**, 8 pm in Park Slope, Brooklyn.

30 Sun **Sunnyside Song Circle**, 2-6 pm in Queens

30 Sun **Gospel and Sacred Harp Singing**, 3pm in Queens

November

2 Wed **Folk Open Sing**; Ethical Culture Soc., Brooklyn, 6:30pm

4 Fri **Brian Peters**, 7:30pm pm at the Community Church ☺

6 Sun **Sea Music: Joe Hickerson + NY Packet**; 3pm, South St.

9 Wed **Community Sing**, 7-10 pm, 9 St YMCA, Brooklyn

12 Sat **Chantey Sing** at Seamen's Church Institute, 8pm

14 Mon **NYPFMC Exec. Board Meeting** 7:15pm at the club office, 450 7th Ave, #972D (34-35 St), info 1-718-575-1906

17 Thur **Riverdale Sing**, 7:30-10pm, Riverdale Prsby. Church, Bronx

18 Fri **Double Trouble**, house concert in Manhattan, 8 PM

20 Sun **Sacred Harp Singing** at St. Bart's, Manhattan; 2:30 pm

Details next page; - ☺=free to members

Table of Contents

Club Events Details	3-4	Calendar Listings	11
Topical Listing of Club Events	5	Repeating Events	14
NYPFMC Club Info	6	Calendar Location Info	15
30 Years Ago	7	Pinewoods Hot Line and ads .	17-19
Hedy West Remembered	8	Membership Application	20
From The Editor	9	Fall Weekend Flyer	Centerfold
Folk Process	10		

Note: Next Month's issue is a 2-month issue (November and December). Be sure to send in any listings early enough for both months!
Also note that concerts at the Community Church start at 7:30pm.

Events Details

CRAIG, MORGAN, ROBSON - English and Scottish Harmony. Fri, Sept. 30th; 8 pm ☺

English and Scottish Harmony at its best. Moira Craig, Sarah Morgan and Carolyn Robson have been quite genuinely stunning the world of traditional song in Britain with the highest quality material, superb singing, depth of knowledge, and a warm and winning way with the audience. This is their first trip to the US; it is an evening not to be missed. Moira is from Scotland, Sarah from the South of England, and Carolyn from Northumberland. Co-sponsored with the Polytechnic University Office of Student Development; at Polytechnic University, Dibner Auditorium. Dibner Auditorium is at Metrotech Center in Downtown Brooklyn, a short ride from Manhattan, accessible on A, C, F (Jay St.), N, M, R (Lawrence St.), 2, 3, 4, 5 (Borough Hall) trains. Metrotech Commons is across Jay St. from the back of the Marriott, enter the commons from Jay St. Dibner Library is on the left, a rather modern university building.

By car: Brooklyn-Queens Expressway to Tillary Street, park along Tillary or Flatbush Ave. after 7:00 (tow-away before 7:00). Enter Metrotech Commons from Flatbush Avenue, Dibner Library is on the right, a relatively modern university building.

FREE to NYPFMC members and Polytech Students and staff; \$18 general public; \$15 CD*NY members; \$10 seniors and full-time students; \$6 children under 12. Information: 212-957-8386.

CAJUN AND BALKAN WORKSHOPS; October 1 & 2

There may still be a space available. For the Cajun workshop (Oct. 1), call : (718) 965-4074 . For the Balkan Workshop call (718) 549-1344 (after 11 AM).

SEA MUSIC CONCERTS; Sundays; October 2, November 6; 3 pm

The first Sunday of the month (except January) members of The New York Packet (Frank Woerner, Bonnie Milner, Deirdre Murtha, Joy Bennett, Alison Kelley, Frank Hendricks, David Jones, Jan Christensen, Dan Milner & Bob Conroy) join featured guests. Co-sponsored with the South Street Seaport Museum. At the Museum's Melville Gallery, 209 Water Street, between Fulton & Beekman. Call 1-212-691-7610 for directions. Latest details at <http://pages.prodigy.net/folkmusic/thenewyorkpacket.htm> Donation is \$5 (children, \$2), pay at the door.

October 2 - The Canniffe Family - Direct from Cork City, Ireland. Mary, Tony, Tim and Dermot Canniffe have been singing together for 14 years in Scotland, Ireland and England. They were headliners at this year's Mersey Shanty Festival in Liverpool. Four strong voices with guitar, mandolin, concertina, fiddle and Irish uilleann bagpipes.

November 6 - Joe Hickerson

FOLK OPEN SING; Wednesdays, Oct. 5th, Nov. 2nd; 6:30-10 pm

Join us on the first Wednesday of each month for an open sing. Bring your voice, instruments, friends, neighbors, and children. Drop by for a couple of songs or the whole evening. At the Ethical Culture Society, 53 Prospect Park West (basement), Brooklyn (near 2nd St.). Directions: F train to 7th Ave.; Q train to 7th Ave.; 2/3 train to Grand Army Plaza. Hosted by Ethical Culture/Good Coffeehouse, Pinewoods Folk Music Club, Alison Kelley, and Frank Woerner. For info: Alison Kelley, 1-718-636-6341.

REMEMBERING TOM GIBNEY; Friday, October. 14th; **7:30 PM** ☺

A memorial concert for a well-loved friend; we will have a celebration of his life and of the traditional music he loved and carried so brilliantly. Tom was a superb musician and singer and a long-time club member. He played for dances in his local Princeton, NJ; sang

NYPFMC Events Details

Remembering Tom Gibney - Continued

with David Jones and Heather Wood as Poor Old Horse; and loved Sacred Harp. Performers include Murray Callahan, David Gibney, Michael Gibney, David Jones, Heather Wood, and others. At the Community Church, 40 E. 35 St between Park & Madison Aves., Manhattan, 7:30 p.m. Free to members, all others \$5. Information: 212-957-8386



SACRED HARPSINGING AT ST. BART'S; Sunday, October 16th; 2:30pm

Co-sponsored and hosted by St. Bartholomew's Church in Manhattan, on the 3rd Sunday of each month Sept. thru June, 2:30 to 5pm, 109 East 50th St. We continue the colonial American tradition of four-part, unaccompanied gospel singing. Beginners welcome! Books available for loan or purchase. Contributions collected; free parking available. Food and fellowship following. Info: Gail Harper 1-212-750-8977.

CHANTEY SING; Saturday, October 22nd, 8 PM

Come to the Chantey Sing at South St Seaport. Bring instruments, voices and songs. Co-sponsored and hosted by the Seamen's Church Institute at 241 Water St NYC. Directions A,C trains Broadway/Nassau St., and J.M.Z, 2,3,4,5, Fulton St. Walk down Fulton St and make a left on Water St. A small donation is requested. Information: 1-718-788-7563.

NEWSLETTER MAILING; Wednesday, October 26th; 7 PM

We need your help to mail out the next Newsletter. Join the important band of volunteers that sticks the stamps and labels and staples the pages to mail out this newsletter. At the Club office, 450 7th Ave. (between 34 & 35 St.), rm 972. Info: 1-718-426-8555.

RIVERDALE SING; Thursday, October 27st; 7:30-10 pm

Bring instruments, voices, and songs to share. In the Bronx at the Riverdale Presbyterian Church, 4765 Henry Hudson Parkway (bet. 246-249 Streets, west side of pkwy). Go down the driveway to the double red doors off the parking area. The sing is in the auditorium. On site parking for the first 18 cars. Donation is \$5. Info: 1-718-549-1344 after 11 AM..

HALLOWEEN SINGING PARTY; Saturday, October 29th; 8 PM

Halloween party at the Brooklyn home of Alan & Rosalie Friend. Bring a song or tune with supernatural overtones, bring instruments and a snack to share. Costumes are fun, but optional. Easiest transportation is the F subway to 7th Avenue. Information 718-965-4074.

GOSPEL & SACRED HARPSING; Sunday, October 30th; 3pm

Join us for singing gospel, plus songs from the Sacred Harp book. This is 4-part harmony sung from written music, so you should be able to carry a tune; sight-singing helpful but not required. Yes, we know it's Easter Sunday, so come and request a song appropriate for the holiday. Bring **food** for a potluck supper (host is supplying drinks). At the home of Stu Shapiro, 86-15 Broadway, apt. 14E, Elmhurst, Queens (718-592-8741). Subways: Take the "G" from Brooklyn or the "R" from Manhattan to Grand Ave, back end of train. Stu is 1 Block North of Queens Blvd on B' way. Look for tall building near subway exit. There is often weekend track work in Queens; you may want to call Transit Information or Stu for last minute changes! Other info: Isabel, 212-866-2029.

SUNNYSIDE SONG CIRCLE; Sunday, October .30st; 2-6 pm

Bring Instruments, voices, and songs to share. Snacks and non-alcoholic beverages to share also welcome. At the home of Marilyn & Steve Suffet, 41-05 47th Street, near Skillman Avenue, in Sunnyside, Queens. Info: 718-786-1533..

Topical Listing of Club Events

South Street Seaport Sea Music Concerts

Co-sponsored with South St. Seaport Museum. In the Melville Gallery, 209 Water St.

Sun, Oct. 2: **The Canniffe Family + NY Packet**; 3-5pm

Sun, Nov. 6: **Joe Hickerson + NY Packet**; 3-5pm

Sun, Dec. 4: **NY Packet**; 3-5pm

Series Concerts - Free to Members ☺

Fri, Sept. 30: **Moira Craig, Carolyn Robson, Sara Morgan**, 8 PM at Polytechnic University Dibner Auditorium

Fri, Oct. 14: **Tom Gibney Memorial**, 7:30pm at the Community Church, 40 E. 35 St

Fri, Nov. 4: **Brian Peters**, 7:30pm at the Community Church

Fridays: February 10, March 3, April 7, May 5: performers to be announced

House Concerts

Fri, Nov. 18 **Double Trouble**, 8 PM

Fri, Dec. 16 **Mei-Mei Hammer**, 8 PM

Special Programs

Sat, Dec. 3: **40th Anniversary Program**, location tba

Weekends

Oct. 21-23: **Fall Folk Music Weekend with Finest Kind** at Kutz Camp, Warwick, NY- see flyer in centerfold

Feb. 3-5: **Winter Folk Music Weekend**, Warwick Conf. Center, Warwick, NY

Workshops

Sat, Oct. 1 **Laissez Les Bons Temps Rouler!** - Elements of Cajun Music Workshop with Erica Weiss; upper west side - see page 3

Sun, Oct. 2 **Balkan Singing Workshop** with Erica Weiss - see page 3

Informal Jams and Sings

Sat, Oct. 29: **Halloween Singing Party** in Park Slope, Brooklyn

Wed, Nov. 9: **Community Sing**, 7-10 pm, YMCA, 9 Street Bklyn.

Sun, Dec. 18: **Pub Sing**; 7- 10 pm, at The Tea Lounge, Union Street in Brooklyn.

Folk Open Sing; First Wednesday of each month except August: (Oct. 5, Nov. 2, etc); 6:30-10 pm at the Ethical Culture Society in Brooklyn.

Gospel & Sacred Harp Sing: Sunday, October 30, 3pm in Queens.

Riverdale Sing; in Riverdale, the Bronx: Usually third or fourth Thursday: 10/27, 11/17, etc.

Sunnyside Song Circle: approx. monthly; 2-6pm Sunday in Queens (dates to be announced).

Sacred Harp Singing at St. Bartholomew's in Manhattan, third Sunday Sept.-June (Oct. 16, Nov. 20, etc.).

Chantey Sing at Seamen's Church Institute, South Street Seaport; usually 2nd or 3rd Saturday, 8pm, Oct. 22, Nov. 12, Dec. 10

Business, Meetings, etc.

Newsletter Mailing, Wednesday, October 26, 7pm, at the Club office, 450 7th Ave. (between 34 and 35 St.), room #972D. Information: 1-718-426-8555

Executive Board Meeting: 7:15 pm, 2nd Monday at the Club office, 450 7th Ave., room 972D. (Oct. 10, etc.). Info 1-718-575-1906

The Club's web page: <http://www.folkmusicny.org>

New York Pinewoods Folk Music Club

The Folk Music Society of New York, Inc./NY Pinewoods Folk Music Club was started in 1965 and is a 501(c)(3) non-profit, educational corporation; an affiliate of the Country Dance & Song Society of America, a member of the Folk Alliance and a member of the NY-NJ Trail Conference. A copy of our annual report is available from our office at 450 7th Ave, #972D, NYC, NY 10123, or from the Office of Charities Registration, N.Y. Dept. of State, 162 Washington Av, Albany, NY 12232.

We have approximately 600 members and run concerts, week-ends, classes, and get-togethers, all with an emphasis on traditional music. The Society is run by all volunteers with a Board of Directors, elected by the membership. The working officers below (members of and elected by the board) welcome your help and suggestions.

Membership fees are listed on the back of this newsletter. Regular memberships include one subscription to the newsletter (10 issues yearly), free admission to our approximately 5 series events, and reduced admission to many events. Won't you join us?

2005 Board of Directors:

Membership: Anne Price, 80 Knolls Cresc, #2M, Bronx, NY 10463; 1-718-543-4971 <aeprice@aol.com>. [Membership coupon on the back cover.]

Circulation (all address changes): Mailing List, Folk Music Society of NY, 450 7th Ave, #972D, NYC, NY 10123

Program: David Kleiman, 245 W. 75 St, #1G, NY, NY 10023; 1-212-721-9382; <david.kleiman@heritagemuse.com>

Education: Alan Friend, 1-718-965-4074 <a.friend@mindspring.com>

Social Chair: [vacant]

President: Joy C. Bennett, 111-39 76 Road, Forest Hills, NY 11375; 1-718-575-1906. <joybennett@att.net>

Vice-President: Evy Mayer 1-718-549-1344

Finance Comm Chair: Jerry Epstein, 34-13 87th St, Jackson Hts, NY 11372; 1-718-429-3437

Treasurer: Heather Wood, 444 W. 54 St, #7, New York, NY 10019; 1-212-957-8386, <hwood50@aol.com>

Publicity: Kate Myslinski, 245 W. 75 St, #1G, NY, NY 10023; 1-212-600-1096, FAX: 1-212-706-0590 <kate@sheridanstreet.net>.

Newsletter: Eileen Pentel, 35-41 72nd St., Jackson Heights, NY 11372; 1-718-672-6399

Volunteer Coordinator: [vacant]

Corporate Secretary: Eileen Pentel

Weekend Coordinator: Joy C. Bennett

Other Board Members: Steve Suffet, Marilyn Suffet, Don Wade

FOLK FONE, 1-212-563-4099

A recording of folk events in NYC (changed weekly). Send last minute listings to: Folk Fone, Folk Music Society, 450 7th Ave, #972D, NYC, NY 10123 (Don Wade plus your name here)

NEWSLETTER INFORMATION (ISSN 1041-4150)

DEADLINE: the 12th of the month prior to publication (no Dec. or Aug. issue). Space reservations should be in by the 10th of the month.

Publisher: Folk Music Society of N.Y., Inc., 450 7th Ave, #972D, NYC, NY 10123; 212-563-4099.

Editor: Eileen Pentel, 35-41 72 St, Jackson Hts, NY 11372; 1-718-426-8555. *Send all Hottlines & ads (with check made out to FMSNY) and all correspondence & articles ONLY to this address.*

Change of address to Circulation (address at left)

Send calendar or listings info directly to the appropriate person below (no charge for listing):

Events Calendar: Lenore Greenberg, 120 Boerum Place, #1J, Brooklyn, NY 11201; 718-403-0347 <lenoreg@nyc.rr.com>

Radio & Location Listings: Don Wade, 35-41 72 St, Jcksn Hts, NY 11372; <WadeD@ncc.edu>

Festival Listings: John Mazza, 50 Plum Tree Lane, Trumbull, CT 06611 <jmazza@snet.net>

Calligraphy/Logo Design: Anthony Bloch

Front Cover heading: Patricia Greene

Flyers: Evy Mayer, Kate Myslinski,

Computer-aided Layout: Don Wade

Other Staff: Harvey Binder, Isabel Goldstein, Ruth Lipman, Judy Polish, Sol Weber.

All members are encouraged to submit articles on folk music & related subjects, and book, concert, and record reviews. Preferably **submit articles and ads on disk, CD ROM or via E-mail to WadeD@ncc.edu.** (Pagemaker 6, ASCII or MS-Word format; MAC ASCII format) or else type them. Send articles to the editor; be sure to include your day & evening phone numbers and keep a copy.

Newsletters are sent by first class mail to members on or about the first of each month (except August & December). Views expressed in signed articles represent those of the author and not necessarily those of the club.

Newsletter Display Ad Rates (our Federal ID number is 13-346848):

Full Page \$100; Size: 4-5/8 W x 7-3/4 H

1/2 Page \$50; Size: 4-5/8 W x 3-3/4 H

1/4 Page \$25; Size: 2-1/4 W x 3-3/4 H

1/8 Page \$13; Size: 2-1/4 W x 1-3/4 H

(less 10% for repeating ads paid in advance)

Sizes are actual print size for camera-ready copy and will be reduced if oversize. Photographs print poorly unless supplied as a velox to the same size. Preferably **ads should be supplied on disk**, in MS Word, Pagemaker 6, TIF, PCX, BMP, or WMF format or laid out camera-ready; delivered, and paid before the deadline. The Editor has no facilities for setting type or doing art work and ads which are sloppily laid out will be refused! Ads are subject to the approval of the Advertising Committee. Page or position placement cannot be guaranteed.

www.folkmusicny.org

E-Mail: nypinewood@aol.com (but it is best to send to individual officers as listed on the left).

30 Years Ago This Month

compiled by Harvey Binder

Here are some club happenings as reported in the September and October, 1975 newsletters (special thank you to Isabel Goldstein for the Sept, '75 newsletter):

September:

- The club presented, in concert, Archie Fisher (at the Museum of American Folk Art.), Vin Garbutt (also at the museum), and Almeda Riddle (Washington Square Methodist Church).
- A singing party was held at the home of Alan and Rosalie Friend.
- Folk music around town included: **1 PENN PLAZA**>Central Park Sheiks; **SOUTH STREET SEAPORT**>Mike Seeger, Yankee Rebels/Cranberry Lake Pickin' and Singin' Society, Oscar Brand; **FOCUS**>Jody Stecher, Central Park Sheiks, Eric Schoenberg; **DYNAMIC**>Susan White & Cathy Ramos, Tom Gamble, Phil Peterson, Wicker Creek/Magic Blues Trio; **OTHER END**>Jack Elliot

October:

- Performers at the Fall Weekend were Alistair Anderson, Ruth Meyer & Harry Guffee, and Luci & Vigo.
- The club presented, in concert, Jo Jankowitz (at Susan Bady's home), Bob Coltman (Our Lady of Peace Church), and Sonia Malkine (Museum of American Folk Art).
- A singing party was held at the home of Ron Schwartz.
- Folk music around town included: **COOPER UNION**>Oscar Brand/Gil Robbins/Jack Landron/Lyn Hardy; **FOCUS**>Bill Horowitz, Garland Jeffries, Steve Caccavo/Robin Rudolph, George & Vaughn Ward; **HARPO'S**>Lydia Nesbitt & Billy Stephen; **SOUTH STREET SEAPORT**>John Guth/Mike Seeger/Lydia Nesbitt & Billy Stephen; **PIT**>Ronny Kahn, John Guth White and Ramos; **LINCOLN CENTER**>Abe & Malka; **NYU**>Joe Val, Central Park Sheiks; **IRISHARTS CENTER**>Bill Ochs; **MUSEUM OF NATURAL HISTORY**> Bob Rodriquez; **DYNAMIC**>Wicker's Creek, Andy Polon/Ken Perlman, Peter Assail/Adrienne Belanger, American Irish Cultural Project

Office Space Needed

The Club continues to look for more appropriate office space. We need space for a desk (with our computer and phone), file cabinet and 2 storage cabinets in a place that is accessible evenings, nights and weekends so our volunteers can get there after their "day" jobs. We also need access to an area that we can use 2 evenings a month for our board meetings (20 people) and our newsletter mailings. We're looking for a Manhattan location with no cats; something shared with another nonprofit might be ideal. This is a continuing search; if you have any ideas, contact Don Wade, 1-718-426-8555 or e-mail <WadeD@ncc.edu>.

Membership Rates Increase

The club board has voted to increase membership rates, effective with all memberships expiring after 30 September 2005.

We regret the necessity, brought about by a combination of falling membership numbers and the increase in costs of printing, office space, etc., plus the anticipated increase in postage costs. The new rates are listed on the back cover.

Perspicacious members will note that, whenever your membership expires, you can save a few bucks by renewing using the coupon from last month's newsletter before the 30 September rate change.

Heather Wood
Treasurer

Hedy West —A Personal Recollection

Hedy West passed away a few weeks ago; she was a friend, an utterly brilliant musician, and a deep and usually very private person. In what follows I will not attempt any sort of full biography, but will instead attempt a personal recollection.

I first heard Hedy on a Folk Legacy recording probably in the later 1960s. Nice songs, I thought (I didn't know a whole lot about traditional singing at the time), good banjo ... but I took little notice. Some time in the early 1970s NY Pinewoods had Hedy as a performer at one of our folk music weekends. Seeing her in person was a whole different matter. Several things struck me. She seemed rather withdrawn, not unfriendly at all, but certainly with little concern for any particular image, not "on stage" in any sense. But the music ... oh my ... I had never heard such intensity of ballad singing. And the banjo and guitar playing simply made my hair stand on end - still does, just imagining it. She did a workshop on the traditional ballads from her family and played tapes of her grandma singing. Here was a totally genuine love of the tradition with no apology and with no self-aggrandizement.

Janis, my girlfriend at that time, was also blown away, and said how incredible it would be to take banjo lessons from Hedy. Janis was not much more than a beginner so she did not think Hedy would consider it, but I said "never hurts to ask". I approached Hedy, who seemed delighted - almost flattered. Hedy lived in Stony Brook, NY, where she was studying composition in the graduate program. Every two weeks or so we would get in the car, and I would drive Janis out for a lesson. We would always stay around afterwards. Hedy would offer tea and fruit or cookies, and we would talk. That is where I began to know her as a person.

She was actually quite shy, and much more involved with ultra-modern composed music than with traditional music at the time. She certainly seemed to have no interest in the process of getting gigs with clubs or festivals. We went once to a concert of her works, probably given as a finale to her master's degree. I confess I thought she was far better as a banjo player and singer, but she really did not feel that the "folkie" world had much interest in her and her music, and thus I think was especially delighted when Janis wanted to study with her. She had received a lot of criticism for not being "traditional", even for betraying her tradition, because her style was, in the technical sense, nothing like other source musicians. Her banjo playing was utterly idiosyncratic and totally unique. She would switch from frailing to picking and back in the same song, play the tune in octaves, in a way I have never heard anyone else even approximate. One might say that she was modernizing the tradition. She made no attempt to imitate the people she learned songs from and made no apology. But what made it special for me was that everything she did was totally supportive of the song! None of it came across as an attempt to display technique, though she had that in superabundance. What came across was a song, a story, with such intensity as to leave the listener absolutely limp. I would find my jaw hanging open at the end.

Later, she spent some years in East Germany, learned German and sang a good number of (very!) left-wing political songs in German. She acquired the Sprechstimme style, which fits material from Brecht very well, but it slipped more and more into the Appalachian songs. Her word timing became wildly exciting, I think partially from her experience with the German material, but it detracted not one wit from the intensity of the song and story. I loved that part. It was totally Hedy and not at all traditional in any technical sense. What did bother me was that the Sprechstimme would sometimes obscure the tune. When I learned her stunning version of *Fair Annie* from the tape of a terrific concert she did for us at the South Street Seaport. I found that in every verse she had essentially spoken the third line and I had to guess at the tune. Years later she did a wonderful concert for us at the Bloomingdale Music School in Manhattan, and afterwards I asked her what was the actual third line of tune to *Fair Annie*. I wasn't too far off, so I have

From the Editor



October brings us colorful fall leaves, a briskness in the air, and a reminder to get ready for the coming winter. One way is to enjoy the music. We have workshops-Cajun music and Balkan Singing; concerts-Moira Craig, Carolyn Robson, and Sara Morgan (actually in September), and the Sea Music concert; and chances to make our own music at the Folk Open Sing, the Sacred Harp and the Gospel and Sacred Harp Singing, the Riverdale Sing, The Sunnyside Song Circle, the Chantey Sing, and the Halloween Singing Party.

Best of all, our Fall Weekend still has room. It's a wonderful new space for us. Come and join us--the first page has pictures from the Spring Weekend (another new place for us, where a good time was had by all). Enjoy the colors of fall and try out Kutz Camp.

We will also have the Tom Gibney Memorial concert, a time to remember Tom, his quiet cheerful manner and the music he loved so much. On another sad note, Hedy West passed away this summer. We were so glad to have the opportunity to see her at the Eisteddfod last summer. We will miss her.

A reminder--the November/December issue is a double issue. Don't forget to send us any articles and ads that you want to run for December as well as November, and save the issue for reference through December

One final note--our hearts go out to those who suffered from Hurricane Katrina. Just as happened for September 11, music helps us to heal and in more concrete ways to raise funds and get help for the people who lost their homes and much more. Many musicians were among them--especially in our New Orleans.

Thank you to the volunteers who help to put out the newsletter each month and ensure that you get the word about what's going on in the club and at events throughout the city. They could always use more help. For the September newsletter thank you to, *Brenda Pena, Marcus Tieman, and Don Wade* who also delivered the pages from the printer. Won't you join us on Wednesday, Oct. 26, and help mail out the November/December newsletter? (See p.4).

Hedy West - continued from previous page

stayed with my somewhat invented tune.

When her daughter was seriously studying violin, Hedy turned to managing what she thought was going to be a major concert career for her. Hedy herself virtually never performed. She was also beginning her long fight with cancer. I had wanted so much to bring her to Pinewoods Camp, where people could spend a week with her, not only hearing her music but also sharing all of the immense background of her tradition. It was not to be. However, we did manage to bring her to the Eisteddfod festival in New York in 2004, and we hoped that she would be at Pinewoods Camp in 2005. I believe the Eisteddfod was her last performance.

I had no idea her death was imminent. In the two or three months preceding, we got into an extended email dialogue about a bunch of things. Some painful experiences with some people in the early years of her performing career; a lot on our families' different experiences with progressive politics; the differences between Jews and Southern Baptists.

A couple of years ago Peggy Seeger was doing a workshop for us on ballads, and the subject of Hedy came up. I said, "Hedy is one of the very few people I would drive 100 miles to see." Peggy answered, "So would I." It is no longer possible. How terribly, terribly sad, what a staggering loss. She was utterly, totally unique, and hearing her was an experience I can't imagine anyone ever forgetting.

The Folk Process

by Ruth Lipman



BARBARA MEHLMAN sends news of the Mehlman family. She writes:

ALISON MEHLMAN was legally married to ANNE FORTIER in Massachusetts by a rabbi last August. They have two daughters, ISABEL (4) and OLIVIA (2), both carried by Anne. The children received their Hebrew names during a ceremony on August 7th. Both HARVEY BINDER and I went to the ceremony. They are wonderfully happy. Alison is a policy analyst for the HIV/AIDS bureau of the Massachusetts Department of Health and Anne is deputy dean for the University of Massachusetts' Amherst School of Continuing Education. MELISSA MEHLMAN, who has a son, JACK (5), gave birth to DORA GRACE on July 9th. Jack has already shown himself to be musically gifted and will be getting musical training at the Solomon Schechter School in Northampton, Massachusetts, where he has just started kindergarten. His instrument of choice seems to be the drums. I am a school librarian at the Campus Magnet High School in south Queens. It used to be the old Andrew Jackson High School. I also write a weekly theater review column which you can find at poughkeepsiejournal.com. It appears in three other newspapers, all in Connecticut. Other writings can be found in the online newsletter, Daily Health News, (no byline) and if things go as planned, I will soon start writing a series of children's books on how to be a good babysitter. On the tech front, I recently bought a new iMac G5, which I adore, and received training from the NYCBOE on a brand new HP Tablet which is a combination laptop and slate. It's a fabulous machine with versatile software that will allow me to do awesome lessons with my students. Everyone is healthy and happy and hope to see a lot of you at the fall weekend.

Congratulations and best wishes to Melissa, Alison and Anne and welcome to the world, Dora Grace.

STEPHANIE P. LEDGIN, has released her second book within a year: *From Every Stage: Images of America's Roots Music*, a collection of 200 photographs and several rare, previously unpublished interviews with key music personalities including Vassar Clements, Bill Monroe and others. A photo exhibit featuring 12 panels from the book opened September 9th at Nashville's Country Music Hall of Fame and runs through November 30th. Her first book, *Homegrown Music: Discovering Bluegrass*, was nominated earlier this year for the Belmont Country Music Book of the Year award. Stephanie, the newest elected member of the International Bluegrass Music Association has been nominated for that organization's international award for "Bluegrass Print Media Person of the Year." The winner will be announced on October 27th at the annual awards dinner in Nashville.

HEATHER WOOD relates how NY Pinewoods members and friends came to the rescue at the Champlain Valley Festival that was held in August in Vermont. When TONY BARRAND, standing in for JOHN ROBERTS (who is recovering nicely from heart surgery) couldn't make it to the Saturday morning workshop, HARVEY BINDER saved the day by filling in with his celebrated "John and Tony Meet the Ramsbottoms" monologue. MICHAEL GIBNEY took his dad's place in the group, Poor Old Horse (with David Jones and Heather Wood).

If you have news to share, contact me at 372 Central Park West, New York, NY 10025; 212-663-6309.

Sending us a check?

Please be sure to make it out to our official corporate name: Folk Music Society of New York, Inc, or just FMSNY. The bank doesn't like checks made out to Pinewoods. Thanks.

Folk Music Events Calendar

For addresses, times, phone numbers, and other details, **see the location information following this and the repeating events.** A listing of repeating events, by day, are found on the pages following these chronological listings. The events with an asterisk (*) are run by the club and more information is on pages 3-4; other events in the listings below are not run by the Club, and the information given is the best available at press time. Everyone is encouraged to send complete information for listing to: Lenore Greenberg, 120 Boerum Place, #1J, Brooklyn, NY 11201; 718-403-0347; E-mail: lenoreg@nyc.rr.com. DEADLINE: the 12th of the **preceding** month.

Notice: Next Month's newsletter is a 2-month issue (November & December). Be sure to send in notice of events for both months by November 12.

Around NYC — September

- | | | | |
|--------|--|------|---|
| 30 Fr | Jay Unger & Molly Mason:
Satella | 7 Fr | Fado of Portugal; Mariza:
WMI, Carnegie Hall |
| 30 Fr* | Moira Craig, Carolyn Robson,
Sara Morgan: See p.2 | 7 Fr | Open Stage; Postcrypt |
| 30 Fr | Andy Cohen + Ragtime Jack
Radcliffe: Good Coffeehouse | 8 Sa | Andy Germack / Dan Torok /
Chris and Aurore; Postcrypt |
| | | 8 Sa | Jimmy Thackery & the
Drivers: Satalla, 7:30pm |

Around NYC — October

- | | | | |
|-------|---|--------|--|
| 1 Sa* | Laissez Les Bon Temps
Rouler!: Elements of Cajun
Music Workshop with Erica
Weiss. 2-4:30pm. See p.3 | 8 Sa | Whirling Dervishes of Turkey:
WMI, Town Hall |
| 1 Sa | Professor Louie & Sarah
Pirtle: Peoples' Voice | 8 Sa | Crossfire Guitar Ensemble:
Muddy Cup |
| 1 Sa | Benefit Concert for Niger;
Mamar Kassey: WMI, Skirball
Ctr. NYU | 9 Su | Joe Beasley Sacred Harp Sing |
| 1 Sa | Flynn / Lauren Smith / Laura
Warfield and the Warfield
Suite: Postcrypt | 10 Mo | Kim & Reggie Harris: Uptown |
| 2 Su | 10th Ann. Bluegrass Festival;
Richmond Town (Staten Island);
noon-6pm; David Peterson &
1946, Dan Paisley & Southern
Grass, The Virginia Ramblers,
and The Beth Coleman Band | 10 Mo | Open Mic: Muddy Cup |
| 2 Su | Chris & Meredith Thompson:
Uptown CH | 11 Tu | Kathleen Pemble, April Vetch
& Red Molly: Satalla, 7:30pm |
| 2 Su | Garnet Rogers & Ember Swift:
Satalla, 7pm | 14 Fr* | Tom Gibney Memorial Concert:
Community Church,
7:30pm. See p.3 |
| 2 Su | Music of Veracruz, Mexico;
Tien-Huicani: WMI, Symphony
Space, 7pm | 14 Fr | Phillip Lynch / Martha T. /
Terence Martin: Postcrypt |
| 2 Su* | Sea Music: The Caniffe Family
+ NY Packet: South St.
Seaport, 3pm. See p.3 | 14 Fr | The Nields: Satalla, 7:30pm |
| 5 We* | Folk Open Sing: Brooklyn
6:30pm See p.3 | 14 Fr | Yunnan Revealed: Music &
Dance from China's Land of
Clouds: WMI, Symphony Space |
| 6 Th | Greg Trooper & Mark Erelli:
Satalla, 7:30pm | 15 Sa | Eric Anderson: Peoples' Voice |
| 7 Fr | Nordic Voices; Hoven Drogen:
Satalla, 7:30pm | 15 Sa | Karl Huth / Scott Fruhan /
Phillip Byrndelsden; Postcrypt |
| 7 Fr | Randal Bays & Roger Landes:
Blarney Star, 9pm | 16 Su* | Sacred Harp Singing: St.
Bart's. See p.3-4 |
| | | 19 We | The Strawbs: Satalla, 7:30pm |
| | | 20 Th* | Riverdale Sing: 7:30-10.
Riverdale Prsby. Church, Bronx.
See p.3-4 |
| | | 21 Fr | Trina Hamlin / Adriene
Gonzalez / The Union Revue;
Postcrypt |
| | | 21-23* | Folk Music Weekend: See flyer |
| | | 22 Sa | Anna Marie Sykes / Red Molly
/ Erik Balkey; Postcrypt |
| | | 22 Sa | Music of Benin: Gangbe Brass
Band: Zankel Hall, 10pm |

Calendar Listings Continued

- 22 Sa **Phil Ochs' Songs** w David Roth, Kim & Reggie Harris, Emma's Revolution, Magpie, Greg Greenway & John Flynn: Peoples' Vce
- 22 Sa* **Chantey Sing:** Seaman's Church Inst. South St. Seaport. See p2-3
- 23 Su **Nordic Voices; Vasen:** Satalla, 7:30pm
- 24 Mo **Open Mic:** Muddy Cup
- 26 We* **NYPFMC Newsletter Mailing**
— see p.4
- 27 Th **Suzanne Vega:** Zankel Hall
- 28 Fr **Odetta:** Satalla, 7:30pm
- 28 Fr **Masters of Indian Music: Ganesh & Kumaresh:** WMI, Symphony Space
- 28 Fr **Gretchen Witt / Jonathan Byrd / Trisha O'Keefe;** Postcrypt
- 29 Sa **Mark Berube / Joe Petri / Jack S. Hardy;** Postcrypt
- 29 Sa **Joel Rafael Band's Woody Guthrie Show:** Peoples' Voice
- 29 Sa **David Lindley:** Satalla, 7:30pm
- 29 Sa **Leo Kotke & Michael Gordon:** Irving Plaza
- 29 Sa **Gordon Lightfoot:** Town Hall
- 29 Sa **Legends of Bulgarian Wedding Music:** WMI, Symphony Space
- 30 Su* **NYPFMC Sunnyside Song Circle** - see p.4
- 30 Su* **NYPFMC Gospel and Sacred Harp Sing** in Queens — see p.4

Around NYC — November

- 2 We* **Folk Open Sing:** Brooklyn 6:30pm See p2-3
- 2 We **Eric Bogle:** Satalla, 7:30pm
- 3 Th **Tim O'Brien:** Satalla, 7:30pm
- 4 Fr* **Brian Peters:** Community Church, 7:30pm.
- 4 Fr **Festival of Arab Arts:** CUNY Graduate Ctr., 6pm
- 5 Sa **Festival of Arab Arts:** Symphony Space, 8pm
- 6 Su* **Sea Music: Joe Hickerson+NY Packet:** South St. Seaport, 3pm. See p.3
- 6 Su **Festival of Arab Arts:** Symphony Space, 2-6pm & 7:30pm

Long Island — October

- 1 Sa **Acoustic Alchemy:** IMAC, 8 & 10:30pm
- 1 Sa **Michael Smith:** FMISOH. 8:30pm
- 1 Sa **Casey Neillo** Last Licks
- 1 Sa **Dave Masono** Boulton Center; 7 & 9:30pm

- 2 Su **Maggie & Suzy Roche:** University Café, SUNY Stony Brook
- 7 Fr **Steve Hackett:** IMAC, 9pm
- 7 Fr **The Work of the Weavers:** UCCCNCH
- 8 Sa **James O'Malley /Carolyn Crusoo** Eclectic Cafe
- 15 Sa **Inaq May Wool & Steve Robinson:** FMISOH, Hard Luck
- 15 Sa **Duncan Sheiko** Boulton Center
- 21 Fr **Eric Burdon & The New Animals:** IMAC, 9pm
- 21 Fr **Remembering Phil Ochs:** Our Times CH
- 22 Sa **The Uppity Blues Women:** IMAC, 9pm
- 22 Sa **Four Bitchin' Babes:** Landmark — see ad p.17
- 22 Sa **Mainline Gospel Trio;**Last Licks
- 30 Su **The Way We Feel: A Celebration of Gordon Lightfoot w Aengus Finnán, Jory Nash & Terry Tufts:** University Café, SUNY Stony Brook

Long Island — November

- 5 Sa **Atwater-Donnelly:** FMISOH, 8:30pm
- 6 Su **Garnet Rogers:** University Café, SUNY Stony Brook

New York State — September

- 30 Fr **David Peterson & 1946 + The Virginia Ramblers;** Emelin

New York State — October

- 1 Sa **The Klezmer Conservatory Band:** Rosendale Café, 9pm
- 1 Sa **Professor Louie & The Crowmatix:** Turning Point, 9pm
- 1 Sa **Roomful of Blues:** Towne Crier
- 1 Sa **Roger McGuinn;** Mainstage - Irvington
- 1 Sa **Blue Grass Jam with Mike Baglione & Suzy Arnowitz** Walkabout
- 2 Su **Acoustic Alchemy:** Towne Crier
- 2 Su **Jill Sobule:** Victorian Mansion
- 4 Tu **Tom Rush;** Watercolor Café
- 7 Fr **Grada:** Towne Crier
- 7 Fr **The Sylvester Brothers:** Turning Point, 9pm
- 8 Sa **Sloan Wainwright Band:** Towne
- 8 Sa **Hurricane Katrina Relief Fund Benefit;** Circle of Friends CH
- 8 Sa **Vance Gilbert and Mustard's Retreat:** Walkabout

Calendar Listings Continued

8 Sa **Blue Plate Special** Walkabout
 9 Su **Catie Curtis:** Turning Point, 3pm
 10 Mo **Chrissy Roberts** Walkabout
 11 Tu **Peter Case;** Watercolor Café
 14 Fr **Toshi Reagan & Big Lovely:**
 Towne Crier
 15 Sa **John Hall & Gulfstream Night**
 + **The Kennedys:** Towne Crier
 15 Sa **Ernie Hawkins:** Rosendale Café,
 15 Sa **Eddie From Ohio + Aztec Two**
Step; Mainstage — Irvington
 15 Sa **Animal & Kid Songs:**
 Westmoreland Animal Sanctuary,
 Bedford. 11:30-2pm. 914 666-8448
 15 Sa **McMule (Bluegrass)** Walkabout
 16 Su **Animal & Kid Songs:** Kingston
 Zoo, Forsythe Pk. Kingston.
 16 Su **Rick Nestler** Walkabout
 16 Su **Mary Gautier:** Turning Pt, 7pm
 20 Th **The Strawbs:** Towne Crier
 21 Fr **A Woman's Voice:** Towne Crier
 21-23* **Folk Music Weekend:** See flyer
 22 Fr **Garnet Rogers:** Rosendale Café,
 22 Sa **Chris Smither:** Towne Crier
 22 Sa **Steve Forbert + Susan Werner;**
 Mainstage - Irvington
 23 Su **Ellis Paul:** Victorian Mansion
 23 Su **Toby Walker (+Guitar work-**
shop) Walkabout
 26 We **Glenn Tilbrook;** Watercolor
 Café
 28 Fr **Battlefield Band:** Towne Crier
 28 Fr **Bill Perry Blues Band:** Turning
 Point, 9pm
 29 Sa **Jeffrey Braun:** Circle of Friends
 29 Sa **Odetta w Buzz Turner:** Towne
 29 Sa **Christine Lavin:** Turning Pt, 7pm
 29 Sa **Son Lewis** Walkabout
 30 Su **Marty Koppel** Walkabout
 30 Su **Kate Taylor:** Turning Point, 4pm

New York State — November

4 Fr **Commander Coty & his East**
Coast Planet Airmen: Turning
 Point, 8 & 10:30pm
 4 Fr **Rachel Davis:** Rosendale Café,
 5 Sa **Eric Anderson:** Turning Point,
 7pm
 5 Sa **Roy Book Binder:** Rosendale
 Café, 9pm
 5 Sa **Larry Kolker (L.I. Slim) +**
Shma Na Na.: Circle of Friends

New Jersey — October

7 Fr **Catie Curtis:** Outpost CH
 8 Sa **Jez Lowe & Bad Pennies +**
Dugan's Hooligans; Sanctuary

21 Fr **The David Bromberg Quartet**
w Angel Band: Outpost CH
 22 Sa **David Wilcox + Kevin Briody;**
 Sanctuary
 27 Th **Glenn Tilbrook:** Maxwells
 28 Fr **Jim Malcolm:** Minstrel CH
 28 Fr **John Gorka:** Outpost CH
 30 Su **Grace Potter and the**
Nocturnals; New Legacy
 30 Su **Pierce Pettis;** Sanctuary

New Jersey — November

4 Fr **Roy Book Binder:** Minstrel CH
 4 Fr **SONia & Eric Andersen:**
 Outpost CH
 5 Sa **Brooks Williams:** Hurdy Gurdy

Connecticut — October

1 Sa **The Kennedys:** Sounding Board
 1 Sa **Peter Mulvey:** Acoustic Café
 1 Sa **Matt & Shannon Heaton:**
 Vanilla Bean Café
 8 Sa **Grada:** U. of Hartford, 7:30pm
 8 Sa **Jon Campbell:** Branford CH
 8 Sa **Gandalf Murphy & the**
Slambovian Circus of Dreams:
 Acoustic Café
 8 Sa **Dana Cooper:** Vanilla Bean Café
 9 Su **Patty Larkin:** Acoustic Café
 14 Fr **Shawn Mullins:** Acoustic Café
 15 Sa **Gene Gallagher:** Acoustic Café
 15 Sa **Amy Gallatin:** Sounding Board
 15 Sa **Lui Collins:** Vanilla Bean Café
 21 Fr **Hoe & Liam Bailey:** Acoustic
 21 Fr **Liz Carroll & John Doyle:** U.
 of Hartford, 7:30pm
 22 Sa **Housewives on Prozac:** Acoustic
 22 Sa **Gordon Bok:** Sounding Board
 22 Sa **Jonathan Brooks:** Westport Arts
 28 Fr **Duke Robillard:** Acoustic Café
 29 Sa **The Highwaymen:** Sounding
 Board (to be held at First Church
 of Christ; 12 S. Main St. W.
 Hartford)
 29 Sa **Group Therapy:** Acoustic Café
 29 Sa **Dan Zanes:** Vanilla Bean Café,
 2pm
 29 Sa **Paul Rishell & Annie Raines:**
 Vanilla Bean Cafe
 30 Su **The Cosmic Jibaros:** Acoustic
 Café

Connecticut — November

5 Sa **Last Fair Deal:** Sounding Board
 5 Sa **Ina May Wool & Friends in the**
Round; Dan Bonis & Open
Book: Vanilla Bean Café

Repeating Events

Note: all are subject to change; it is wise to call and check. (Locations listed in the Events Calendar are usually **not** included below.). **Space limitations force this to be an ABRIDGED LIST. For a complete listing, including more NYC Irish and Bluegrass/Old Time, Upstate NY, Conn., and Penna events, see last month and the July/August newsletter. The complete list is available online at: www.folkmusicny.org/10-REPT.html**

Additions and Corrections to this list are most welcome! Send all location information to: Don Wade, 35-41 72nd St, Jackson Heights, NY 11372; Phone: 1-718-426-8555; E-Mail: WadeD@ncc.edu

#=new or changed item.

NYC GENERAL REPEATING MUSIC:

multi-day:

BB King's Blues Club, 237 W. 42nd St, 1-212-997-4144; www.bbkingblues.com
various live music all week

Brazen Head, 228 Atlantic ave (Boerum Pl & Court St), Brooklyn; 718-488-0430;
various live music all week

C Note, 157 Ave C (10 St); 212-677-8142
performances nightly 7-11pm with
Songwriter's open mike Sun's

The Ear Inn, 326 Spring St; 212-226-9060;
Mon's & Wed's

Orange Bear, 47 Murray St; 212-566-3705;
Mon's @ 7pm, bands & singers; Sun's
6-9pm, open mic *Paddy Reilly's*. 519 2
Ave, Manhattan (29 St) 212-686-1210;
nightly music 9:30pm; **Sat** Songwriter
Folk/Rock & Country, 7pm; (see also
Irish multi-day listings); [Yellowbarber@
aol.com](mailto:Yellowbarber@aol.com); 212-686-1210

Sidewalk Cafe, 94 Ave A (6 St.); 212-473-7373; Antihoot Mon's @ 7:30, performers
nightly; www.antifolk.net

Mondays:

The Lounge at TRIAD, 158 W. 72 St, 212-362-2590; open mic 7-9pm

Open House Coffee House; Advent Lutheran
Church, 93 St. & B'way; 212-874-3423;
7:30-9:30PM

Wednesdays:

Cornelia Street Cafe, 29 Cornelia Street,
Greenwich Village. The Songwriter's
Beat, an acoustic night for songwriters
hosted by Valerie Ghent, 3rd Wed.
www.songwritersbeat.com, www.corneliastreetcafe.com, or 212-989-9319

Thursdays:

New York Caledonian Club §: Pipes & Drums
of the NY Scottish, rehearsals every
Thurs, Chanters at 6; pipes at 7, info
212-724-4978; (PO Box 4542, NYC
10163-4542; 212-662-1083)

Freddys, Dean St & Sixth Ave, Brooklyn,
718-622-7035; Open Mic Third Thurs-
day; <http://freddysbackroom.com>

Charles Street Synagogue, 53 Charles St (at
W. 4 St, 2 bl. N. of Sheridan Sq); music

of the Jewish Mystics most Thursdays w/
Andy Statman & Friends; 8:30pm;
\$10; 212-242-6425

<info@andystatman.org>

Old Stone Coffeehouse, 336 3rd St. between
4th & 5th Ave., in J.J. Byrne Park, Park
Slope, Brooklyn. Third Thursdays, 8pm;
\$5; 917-541-7076

<stammers@stammers.com>

Unknown Pub, 355 Prospect Av, Park Slope,
Bklyn; Open Mic 8pm; 718-788-9140

Workmen's Circle Chorus, 45 E 33 St.; 6-
8pm; (Yiddish music) Info: 212-889-
6800.

Fridays:

Hungarian House, 213 E. 82 St, betw 2 & 3
Ave; Bulgarian Singing Classes w/ Pepa
Koutcheva; 6:30-7:30pm; free. info: 212-
289-8203 <[www.cnct.com/~ginbirch/
dfd](http://www.cnct.com/~ginbirch/dfd)>

New York Caledonian Club §: Ceilidh, First
Fri, call for info (PO Box 4542, NYC
10163; 212-662-1083); 212-724-4978

Fri & Sat:

Two Boots, 514 Second St (at 7 Ave) Park
Slope, Brooklyn; shows Fri & Sat 10pm;
718-499-3253

Saturdays:

Living Room, 154 Ludlow St (bet. Stanton
and Rivington); (no sing in Oct. 2005) 1st
Sat. Shape note Singing from the Sacred
Harp, 3-6pm, free; 212 777-9837
www.livingroomny.com

Seamen's Church Institute, 241 Water St
(north of Fulton St.), 2nd floor, Manhat-
tan; once monthly Chanty Sing; 8-11pm;
see p.2-3; info: Becker; 212-748-8675
<www.eclipse.net/~gwb>

Sundays:

Centerfold Coffeehouse; Church of St's Paul
& Andrew, 263 W. 86 St, Manhattan
(West End Av); Open mic/poetry reading
at 5:45pm; info: Mary Grace, 212-866-
4454.

Klezmer Sundays at Tonic: 1:30 & 3 pm;
Tonic, 107 Norfolk St; 212-358-7503;
\$10; food & drink available;
<www.tonic107.com>

The complete list is available online at:
www.folkmusicny.org/10-REPT.html

Folk Calendar Listings Info

This list gives more detailed information for locations listed in the chronological Events Listings. It does not generally include information about locations in the Repeating Events listings

Space requirements force this info to be AN ABRIDGED LIST. For a complete listing of locations not in the calendar and out of town repeating events, see the July/August issue. For a listing of Dance events, see the September 2002 issue. Most of the events in the listings are not run by the Club, and the information given is the best available at press time. Additions and Corrections to this list are most welcome! Send location info.n to: Don Wade, 35-41 72nd St, Jackson Heights, NY 11372; E-Mail: WadeD@ncc.edu

#=new information or listing

% = Folk Society with a newsletter which lists area events.

AROUND TOWN (The 5 boroughs of NYC); FOLKPHONE: 1-212-563-4099

Blarney Star Productions at Glucksman Ireland House at New York Univ, 1 Washington Mews (enter on 5th Av off Washington Square); 9pm 1-212-998-3950, www.blarneystar.com

Carnegie Hall, 57 St & 7th Ave, Manhattan; 1-212-247-7800

Community Church; 40 E. 35 St, Manhattan; used by various organizations—see p. 3-4

CUNY Graduate Center, 365 Fifth Avenue, between 34 & 35 St.

Good Coffeehouse Music Parlor; Ethical Culture Society, 53 Prospect Park West, B'klyn 11215 (at 2nd St); 1-718-768-2972; Fridays, 8pm; www.bscc.org/events/coffeehouse/ Irving Plaza, 17 Irving Place; 212-777-6800

Joe Beasley *Sacred Harp Singing*: 2nd Sun at St. Paul's Church, 199 Carroll St (cr. Clinton), Brooklyn; 1-718-793-2848; 2pm followed by Pot-Luck supper.

Muddy Cup Cafe, 388 Van Duzer Street, Staten Island; 8pm (open mic, 7pm) 1-718-818-8100; No cover. Directions: <http://www.muddycup.com/mudlane/directions.html>

Peoples' Voice Cafe; Sat 8PM at Workman's Circle, 45 E. 33 St (between Park & Madison); info: 1-212-787-3903, www.peoplesvoicecafe.org; \$10 (reduced rates for seniors)

Postcrypt Coffeehouse; St. Paul's Chapel bsmt, Columbia Univ. 116 St & B'way; Fri's & Sat's during school year only (closed May-Sept. & Dec.-Jan.), 9pm, free; 1-212-854-1953; <postcrypt@columbia.edu>; <http://www.columbia.edu/cu/postcrypt/coffeehouse/>

Richmondtown Restoration, Staten Island Historical Society, 441 Clarke Ave, Staten Island; Free parking. 15-minute drive from all bridges to Staten Island. Take bus S 74 from the Staten Island Ferry.; Info: www.historicrichmondtown.org or call 718 351-1611 x 236
Riverdale Presbyterian Church, 4765 Henry Hudson Parkway (between 246-249 Streets, west side of parkway) NYPFMC open sing — see listing on p.2-3.

St. Bartholomew's Church, 109 East 50th St, Manhattan; NYPFMC Sacred Harp singing on the 3rd Sunday of each month through June, 2:30 to 5:30pm — see pages 2-3

Satalla, 37 West 26 St (between 6 & B'way); 1-212-576-1155; \$20 plus one drink minimum www.satalla.com ;

Seamen's Church Institute, 241 Water St (north of Fulton St), 2nd floor, Manhattan; Monthly Chantey Sing 8-11pm; (donation asked). <http://www.woodshippmusic.com/nychanty/nychanty.html>.

South Street Seaport Museum, foot of Fulton St. at the East River in the Beekman Annex, 219 Water Street, at Beekman, 1 block north of Fulton St and the East River. Sea Music, First Sunday; 3pm 1-212-691-7243, see page 3

Symphony Space; 95 St & Bway, Manhattan; 1-212-864-5400; various groups.

Town Hall, 123 W. 43 St, Manhattan, 1-212-840-2824; Ticketmaster 1-212-307-7171

Uptown coffeehouse, Ethical Culture Soc, 4450 Fieldston Rd, Riverdale (Manhattan College Pkwy); Sun 7PM, Sun 7PM, \$15 adult (\$13.50 seniors, students; \$3 children); 1-718-885-2955; <http://www.uptowncoffeehouse.org>.. kerner@csam.com 03/03]

WMI- World Music Institute Concerts: (8:00 PM unless indicated) various locations:

Carnegie Hall, 57 St & 7th Ave, Manhattan; 1-212-247-7800; Skirball Ctr. NYU, 566

LaGuardia Place (Washington Square South); 1-212 992-8484; Symphony Space; 2537

Bway (at 95th St), Manhattan; 1-212-864-5400; Town Hall, 123 W. 43 St, Manhattan, 1-

212-840-2824; info: World Music Inst., 49 W.27 St 10001, 1-212-545-7536; <http://www.heartheworld.org>

Zankel Hall at Carnegie Hall, 57 St & 7th Ave, Manhattan; 1-212-247-7800

Calendar Listings information Continued from previous page

LONG ISLAND

- Boulton Center for the Performing Arts; 37 W. Main Street Bay Shore (631)969-110; www.boultoncenter.org
- #Eclectic Café, Unitarian Universalists Society of South Suffolk, 28 Brentwood Rd, Bayshore; www.eclecticcafe.org; 631-968-0667; Exit 44 Route 27 Sunrise Highway. West side of block north of 27A
- FMOH=Huntington Folk Music Society % (PO Box 290, Huntington Station 11746) Hard Luck Cafe 1st Sat and concerts 3rd Sat each month at The Congregational Church of Huntington, 30 Washington Drive, Centerport (north side of Route 25A at Huntington border). An open mike at 7:30PM precedes each concert at 8:30PM; 1631-425-2925 or 1631-661-1278; <http://fmsnhny.org/>
- Hard Luck Cafe: 3rd Saturday of each month at The Congregational Church of Huntington, 30 Washington Drive, Centerport (north side of Route 25A at Huntington border; 8pm; refreshments available; run by Huntington FMS—see FMSOH.
- IMAC: Inter-Media Art Center, 370 New York Ave, Huntington 11743; Sat's at 9PM, some folk; 1-516-549-9666; www.imactheater.org
- Landmark Community Center, 232 Main St, Port Washington; 516-767-6444; 8pm performances in their Jeanne Rimsky Theater
- #Last Licks Café, Unitarian Universalist Fellowship of Huntington, 109 Browns Rd, Huntington; www.lastlickscafe.com; 631 427-9547) info@lastlickscafe.com]
- Our Times Coffeehouse, Ethical Humanist Society, 38 Old Country Rd, Garden City (2 mi west of Meadowbrook Pkwy, beside water tower); monthly except July & Aug., 8PM; \$10 (\$8 child/student); 1516-541-1006; <http://www.ourtimescoffeehouse.org/>.
- University Café: Sunday Street Acoustic Concert series; Student Union, Stony Brook University Stony Brook, New York 631-632-6027 www.universitycafe.org; e-mail: gpalai@notes.cc.sunysb.edu
- UCCN Coffee House Concerts; Unitarian Universalist Congregation of Central Nassau 223 Stewart Avenue Garden City www.uccn.org one Friday of the month (mostly first Friday) \$15 Admission; <http://www.uccn.org/>

UPSTATE NEW YORK also look at: The Hudson Valley Calendar: <http://www.HVmusic.com/cgi-bin/getevent.pl?bydate=yes&fordays=12>

- #Circle of Friends Coffeehouse; St. John's Hall * 8 Sunnyside (& Bedford) Pleasantville; 8pm ; Sat. concerts Pleasantville Folk Circle, 2nd Fri; <http://www.songster.org/>
- Emelin Theater; Library La, Mamaroneck, 10543; 8:30PM; 914-698-0098; \$16-32
- Mainstage Coffeehouse, Westchester Arts Council, 31 Mamaroneck Ave, White Plains; 8PM; refreshments avail; 914-949-2913; www.TheMainstage.org; Shows at Irvington Town Hall (914) 591-6602) and The Paramont Centre for the Arts (Peekskill) (914) 739-2333
- Rosendale Cafe, 434 Main St, Rosendale 12472; 845-658-9048; 9pm cover & min; www.rosendalecafe.com
- Towne Crier Cafe, 62 route 22, Pawling 12564; 845-855-1300; www.townecrier.com; reservations suggested; Fri & Sat, 9PM; Sun-Thur, 8PM; open mic,\$4, 7:30PM (5-7PM sign up); \$15-25
- Turning Point, 468 Piermont Ave., Piermont, Rockland County (off rte 9W south of Nyack); (845) 359-1089; food avail; www.piermont-ny.com/turning
- Victorian Mansion Concerts; Orange County Community College, 115 South Street, Middletown (845) 342-0878 www.friendsofmusic.net; Pot Luck Share Lunch at 2:00, Concert at 3:00; \$20-\$35
- Walkabout Clearwater Coffeehouse; 7:30PM, Memorial United Methodist Church, 250 Bryant Ave, White Plains; (914) 242-0374; www.WalkaboutClearwater.org one Sat each month
- Warwick Valley Winery, 114, Little York Road, Warwick, Uncorked And Unplugged In The Orchard Concerts; Sat & Sun, 2-5pm plus special concerts. http://www.vvwinery.com/unplugged_01.html; (845) 258-4858 #Watercolor Café, 2094 Boston Post Road, Larchmont, NY 10538; 914-834-2213 www.watercolorcafe.net; usually Tues, at 8pm
- NEW JERSEY** (Folk Project/FMSNJ/Hurdy Gurdy Folk Phone: 973-822-1313)
- Hurdy Gurdy Folk Music C'hse; Central Unitarian Church, 156 Forest Ave, Paramus 07652 (Forest Av exit on Rt.4); info: 201-447-2716, adv. tickets 201-791-2225; 1st Sat, 8pm, through May. (run by Hurdy Gurdy Folk Music Club %; 201-871-7949; <info@hurdygurdyfolk.org>; www.hurdygurdyfolk.org.)
- #Maxwell's, 1039 Washington St., Hoboken 201-507-8900/212-307-7171; www.maxwellsnj.com; 3rd Tues NJ Songwriters in the Round

Calendar Listings information Continued from previous page

#Minstrel Coffeehouse; Fri, 8:30pm, \$5 (2nd Fri, open stage); Morristown Unitarian Fellowship, 21 Normandy Heights Rd, Morristown, NJ. (Run by Folk Project %, POB 41., Mendham 07945; 973-335-9489; <http://www.folkproject.org>; Sat concert info: 973-335-9489

#New Legacy Concert Series, Ringwood Public Library, 30 Cannici Drive, Ringwood; 973-962-6256; www.palsplus.org/rpl; \$10-20; 2pm Sun

Outpost in the "Burbs" Coffeehouse (singles & couples over 20) First Congregational Church, 40 S. Fullerton Ave, Montclair 07042 (enter rear of building); twice monthly; 9pm; Steve or Rich, 973-744-6560; www.outpostintheburbs.org

Sanctuary Concerts, Some Sat's, 8pm at Presbyterian Church of Chatham's, 240 Southern Boulevard, Chatham; Sundays: 18 Stirling Rd., Watchung (Watchung Arts Center), 1-973-376-4946; www.sanctuaryconcerts.org

CONNECTICUT (Southern New England-WWUH FOLKPHONE: 860-768-5000) Acoustic Cafe, 2926 Fairfield Ave, Bridgeport, 06605; Tuesdays open mic; 1-203-355-3655, www.acousticcafe.com

Branford Folk Music Society, First Cong. Ch, 1009 Main St, Branford, 8pm; 1-203-488-7715, <branfordfolk@yahoo.com>, <http://folknotes.org/branfordfolk/>

Sounding Board C.H., Universalist Church of West Hartford, 433 Fern St., West Hartford CT; Sat's, 8pm, \$10, (closed July & August) info: Brent Hall, 460 Wallingford Rd, Cheshire, CT 06410; 203-272-8404; <http://folknotes.org>.

Univ. of Hartford - (W)Wilde Auditorium or (M)Millard Auditorium, 200 Bloomfield Ave. (Rt. 189), W. Hartford; Fridays 7:30; 1-860-768-4228 or 1-800-274-8587

Vanilla Bean Café, corner of 44, 169 & 97, Pomfret; 8pm Sat eve's plus first Fri open mike, 860-928-1562; www.thevanillabeancafe.com; \$5-15

Westport Arts Center concerts at Seabury Center, Christ & Holy Trinity Ch, 45 Church Lane, Westport or at Greens Farms School, 17 Morningside Dr S, Westport; 1-203-222-7070

Additions and Corrections to this list are most welcome! Send all location info to: Don Wade, 35-41 72nd St, Jackson Heights 11372; 1-718-426-8555, <WadeD@ncc.edu>.

The Jeanne Rimsky Theater at Landmark on Main Street Presents...

Fabulous Females of Folk



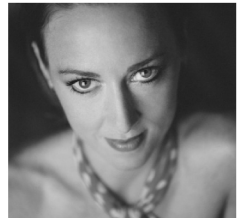
Four Bitchin' Babes

Oct. 22, 2005 • 8 pm



Patty Larkin

Dec. 3, 2005 • 8 pm



Jonatha Brooke

April 8, 2006 • 8 pm

Hosted by WFUV's City Folk Sunday Breakfast DJ, John Platt

Tickets: \$35 premium / \$30 standard



The Jeanne Rimsky Theater
AT LANDMARK ON MAIN STREET
232 Main Street, Port Washington, NY

Special savings on the 3-program series:
\$75 premium / \$70 standard

Box office: 516 767-6444

www.landmarkonmainstreet.org

PEOPLES' VOICE



Peoples' Voice Cafe at the Workmen's Circle

45 E. 33rd St., NYC (bet. Park & Mad)
Saturdays at 8 PM; Doors open 7:30

**Oct. 1: Professor Louie & Fast Eddie +
Sarah Pirtle**

Oct. 8: Tony Bird + Bruce Markow

Oct. 15: Eric Andersen CD Release

Oct. 22: Phil Ochs Song Night

Oct. 29: Woody Guthrie Show

with the Joel Rafael Band

Nov. 5: Si Kahn

\$12 - more if you choose, less if you
can't; TDF accepted; member discounts

Info: 212-787-3903
www.peoplesvoicecafe.org
See upcoming website listings.

Bernard Stolls & The Long Island
Traditional Music Association
present

The 1st LITMA Fall Music & Dance Jamboree Saturday, Nov. 19, 2005

The Old First Church
Huntington, NY
dance, music, & song workshops
buffet dinner
Contra & English Country Dance

Jamboree attendance by
pre-registration only.

Contact Bernie for info.
BStolls@optonline.net

18th Annual NOMAD Festival

November 4-6, 2005

Wilbur Cross High School

NorthEast Music, Art and Dance

New Haven, Connecticut

Saturday 10 a.m. – 11 p.m. Sunday 11 a.m. – 5 p.m.

Friday Night Contra Dance 8 – 10:30 p.m.

Concerts, Jam Sessions, Family Activities, Workshops, Song Swaps,
Contra, Square, Scottish, International & Other Dancing.

Jerry Epstein, John Roberts & Lisa Preston, Sol Weber, Debra Cowan,
Lynn Noel, Evy Mayer, The Patons, MacDougal Street Rent Party, Mike
Agranoff, Sean & Deirdre Murtha, Judy & Dennis Cook, Sonja Savig,
Diane Taraz, Steve Suffet, Triple Play, Joel Landy, many more.



Wilbur Cross High School is at 181 Mitchell Avenue, just a few blocks from Yale.
Parking at H. S. or Yale. Metro North service available to New Haven.

All tickets at the door. ♦ No advance sales.
(203) 453-3263 or (203) 372-3890
nomadfest@nomadfest.org • <http://www.nomadfest.org>

Pinewoods Hot Line

Anyone may place Advertisements of 40 words or less (because we use proportional spaced type, please avoid all-caps). RATES: \$10 each Hotline per month (\$5 for members), 1/2 year for \$30 (\$15 for members). Members please include mailing label for discount. (Lost & Found ads are free.)

Send all materials to: Eileen Pentel, 35-41 72nd St, Jackson Heights, NY 11372. We will be happy to accept ads on disk (MS-DOS ASCII format is best but we can deal with others) or by E-mail with the text as part of the message (coincident with mailing your check) to WadeD@ncc.edu. All ads must be **prepaid** make checks payable to: Folk Music Society of N.Y., Inc. (FMSNY). [Last run date is in brackets.]

Sound reinforcement: Your program deserves the best, whether it's a concert or a large festival. **Location recording:** Direct to stereo or Digital 8-track recording and editing. Acoustic Folk and Classical are specialties. Collegium Sound, Inc.; Don Wade or Jerry Epstein, 1-718-426-8555 or 1800-356-1779; soundman@computer.org [1-06]

Guitar Lessons.

If you would like to play better...
Taught by excellent, patient teacher.
Jane Babits, (212) 861-7019

[1-07]

Everybody can Sing—and I can prove it! For private or group lessons, "...a wonderful, patient, sensitive teacher who makes everyone feel more confident in their abilities."
Elissa Weiss, 1-212-874-6447. <http://www.everybodycansing.com> [1-07]

Attorney with practice in real estate, wills/estates, elder law. Pinewoods member—reasonable rates, confidential. Mariann Perseo, 276 Fifth Ave, Suite 306, NYC, NY 10001, 1-212-684-4289/fax-4299 or Mperseo@aol.com [3-06]

Minstrel Records: Bob Coltman, David Jones, Jack Langstaff, Almeda Riddle, Frank Warner, Jeff Davis, Jerry Epstein, Dwayne Thorpe, Sonja Savig. On LP, newer releases on CD & cassette. Visit our website at www.minstrelrecords.com or write for a listing: Minstrel Records, 35-41 72 St, Jackson Hts, NY 11372 [1-06]

Singing Books/Albums: Popular *Rounds Galore*, recommended by Pete Seeger and others, plus the great *Rounds Galore...and More CD/cassette* (vol 1 & 2), recommended by Christine Lavin, Peter Schickele, Bob Sherman, Jean Ritchie, Oscar Brand,... Book, \$15 + \$2.50 shipping; CD/cassette, \$15/10 + \$1.50 shipping. Also, rounds book **Sequel** (\$6 + \$1.50); **Sight Singing Guide** (\$2 + \$1.25); *Rise Up Singing* (good price); new Joanne Hammil rounds albums and books, Bob Blue Songbook/albums/video; John Krumm books/CD (rounds, songs); gospel books and more. Sol Weber, 25-14 37th St, Astoria, NY 11103. <solweber@juno.com> Send check, or SASE for info. [2-06x2]

Country Dance*New York, Inc. Sponsoring English and American Country Dancing in New York City for over 50 years. Live music. All dances taught. Beginners & Experienced dancers welcome. No partners necessary. September to June. ENGLISH dancing, Tuesdays, 7:00-10:15 p.m. AMERICAN dancing Saturdays, 8:00 -10:45p.m. (beginner basics at 7:45 p.m.) Metropolitan-Duane Hall, 201 W. 13th St (NW corner of 7th Ave, side entrance). For current information, visit our website: www.cdney.org or call the Dancephone: 1-212-459-4080. [11-05x2]

Order today, online or in-store! Critically acclaimed books by author-photographer Stephanie P. Ledgin. *Homegrown Music: Discovering Bluegrass* (Ricky Skaggs foreword) and *From Every Stage: Images of America's Roots Music* (Charles Osgood foreword). Info and personalized copies, visit <http://fiddlingwithwords.com>. Phone 732-699-0665. [1-06]

Folk Fone Help Wanted

We need additional people to record folk fone. You need to be comfortable using a computer and able to get into the Club office at your convenience. We work on a rotating schedule and each person records about once every 3 weeks. Contact Don Wade, <WadeD@ncc.edu>, 1-718-426-8555.



Folk Music Society of N.Y., Inc.
 450 Seventh Ave., #972-D
 New York, NY 10123
 212-563-4099
 www.folkmusicny.org

October 2005
 printed in U.S.A.

FIRST CLASS MAIL

MEMBERSHIP APPLICATION

(For a sample newsletter, write to the Club office—address at left.)

To join (or to renew) and receive the newsletter regularly, mail this to:

**FMC membership, c/o Anne Price,
 80 Knolls Crescent, #2M,
 Bronx, NY 10463; 1-718-543-4971.**

**MAKE ALL CHECKS PAYABLE TO:
 Folk Music Society of New York, Inc.**

Yearly Dues

- \$38 individual; \$55 family/dual;
- low income/full-time student:
 \$25 individual \$30 family
 (low income is a hardship category for those who can not otherwise afford to join).
 (please state reason: _____)

Two Year dues:

- \$70 individual;
- \$100 family/dual (one household).

Memberships above include newsletter, free admission to our regular events series and reduced admission to many other events.

Long Distance Membership (more than 50 miles from midtown Manhattan):

- Yearly dues: \$28 Individual;
- \$43 family/dual

Includes newsletter, weekend discounts, voting privileges, but not free concerts.

- I wish to be a supporting member, my check includes an additional \$ _____ over regular dues. (Additional contributions are tax deductible, as permitted by law.)
- renewal (exp month: _____)
- new (How did you first hear about us? _____)

Name(s): _____

Address: _____

City: _____

State: _____ ZIP _____

Telephone (_____) _____

E-Mail: _____

For family memberships, please list the names of others in the same household not listed above:

adults: _____

children: _____

I want to help:

- with the newsletter; with mailings;
- post flyers around my neighborhood or on my school or company bulletin board.
- other _____